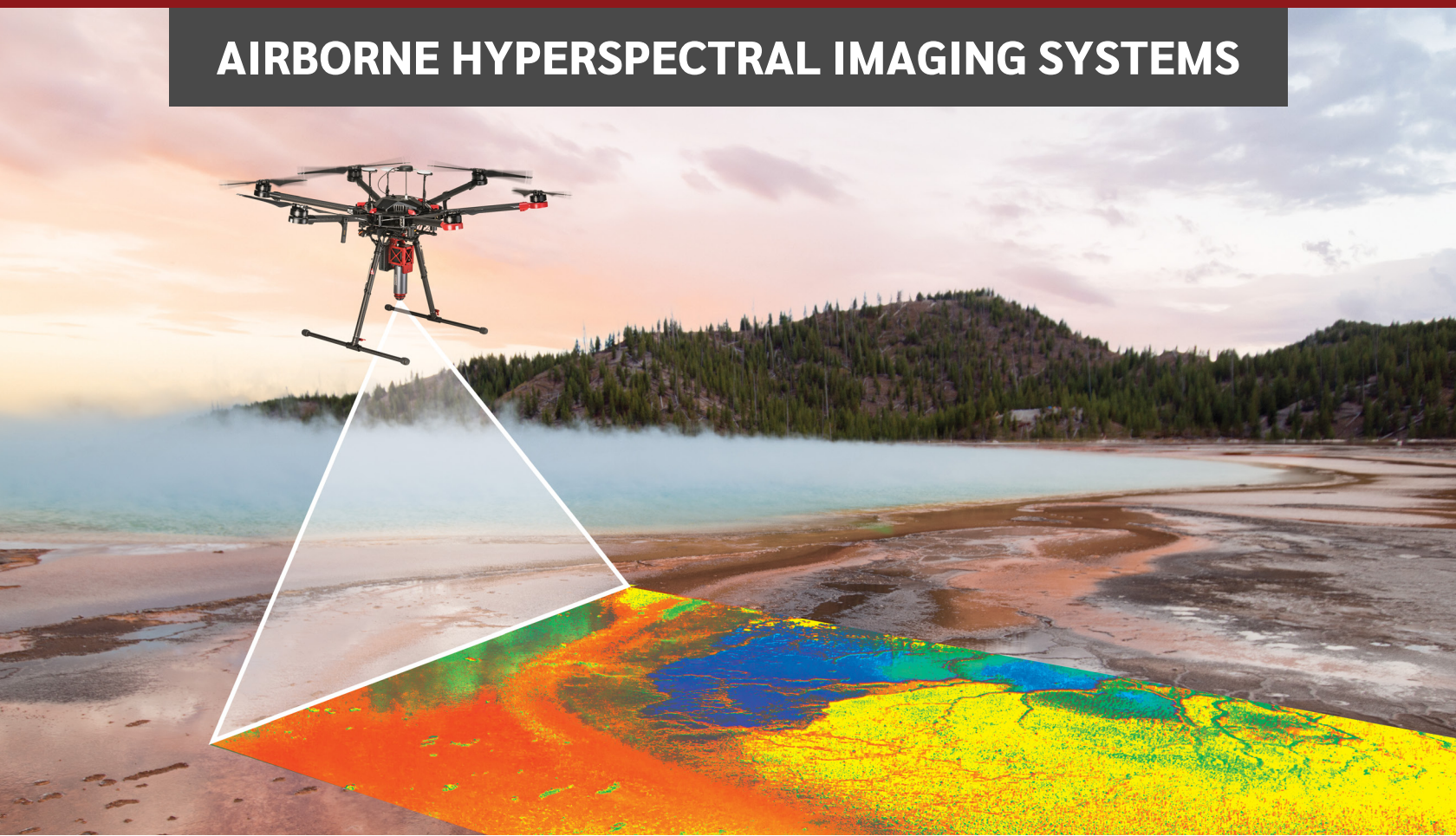


RESONON

AIRBORNE HYPERSPECTRAL IMAGING SYSTEMS



DELIVERING GEOREGISTERED HYPERSPECTRAL DATA

Complete Hyperspectral Imaging Systems for Airborne Remote Sensing

SYSTEM COMPONENTS

- ◆ Hyperspectral Imaging Camera
- ◆ Data Acquisition Unit
- ◆ Ellipse D GPS/IMU
- ◆ Georectification Software
- ◆ Post-Processing & Analytical Software
- ◆ System Mounts for UAV's or Piloted Aircraft
- ◆ Radiometric Calibration & Calibration Target
- ◆ Optional RTK for Centimeter-Scale Positioning



Multiple options are available. Please contact us to discuss your requirements.

HYPERSPECTRAL CAMERA OPTIONS

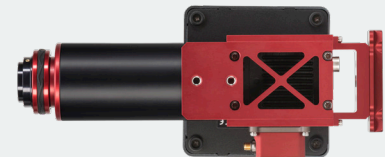
	Pika UV	Pika L*	Pika XC2	Pika IR	Pika IR+	Pika IR-L	Pika IR-L+	Pika SWIR
Spectral Range (nm)	330 – 800	400 – 1000	400 – 1000	900 – 1700	900 – 1700	925 – 1700	925 – 1700	1000 – 2500
Spectral Bands	255	281	447	168	336	236	470	245
Spectral Resolution – FWHM (nm)	2.8	2.7	1.9	8.8	5.6	5.9	3.8	7.7
Spatial Channels	1500	900	1600	320	640	320	640	640
Maximum Frame Rate (fps)	142	126	165	508	240	364	176	120
Imager Weight, without lens (kg)	2.27	0.64	2.51	2.95	2.95	1.01	1.01	3.98
Complete System Weight (kg)	3.60	1.83	3.84	4.33	4.33	2.23	2.23	5.36

* The Pika L camera used for the Airborne System has a GigE output for reliable operation in the electronically-noisy environment found on some small UAV systems.

PIKA L AIRBORNE SYSTEM



PIKA IR-L / IR-L+ AIRBORNE SYSTEM



FULLY-INTEGRATED AIRBORNE HYPERSPECTRAL SYSTEM

Vision Aerial's Vector hexcopter fully-integrated with a Pika L, Pika IR-L, Pika IR-L+, or Pika UV airborne system.



SIMPLICITY

Streamlined purchase, set-up, and support

VERSATILITY

Other payloads available: LiDAR, thermal, multispectral, SLR camera sensors, and more

LONG RANGE AND FLIGHT TIMES

20-km range and long flight times:

Pika L = 33 minutes | Pika IR-L/L+ = 31 minutes

SECURITY

2020 NDAA and TAA compliant controller available