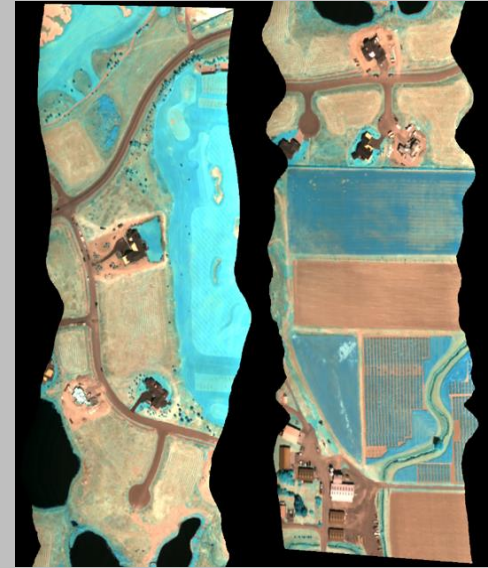


Airborne Hyperspectral Imaging Systems



Complete hyperspectral imaging systems for airborne remote sensing.

Resonon's hyperspectral airborne systems are fully integrated turnkey solutions, with all hardware and software necessary to acquire and analyze georegistered hyperspectral data.

Payload weights begin at 3.5 lb (1.6 kg).

System components:

- Hyperspectral imaging camera
- System control computer
- System control software
- SSD data storage
- GPS/IMU
- Georectification software
- Multiple calibration options
- Flexible mounting options
- Spectron** data analysis software
- Training services



Spectron is Resonon's user-friendly data analysis software. **Spectron** contains tools for georectification, batch processing, mosaicing multiple datacubes, and analyzing hyperspectral data.

Sample datacubes and **Spectron** software are available for free download at www.downloads.resonon.com.

Multiple options are available for each configuration. Please contact us to discuss your technical requirements.





Visit www.resonon.com for complete product specifications.

Hyperspectral Camera Options



Resonon's airborne systems can be fitted with the following hyperspectral imaging cameras:

	Pika L	Pika XC2	Pika NIR-320	Pika NIR-640	Pika NUV
Spectral Range (nm)	400 – 1000	400 – 1000	900 – 1700	900-1700	350 – 800
Spectral Resolution (nm)	2.1	1.3	4.9	2.5	2.3
Spectral Channels	281	447	164	328	196
Spatial Channels	900	1600	320	640	1600
Max Frame Rate (fps)	249	165	520	249	165
Bit Depth	12	12	14	14	12
Imager Weight	1.3 lb (0.6 kg)	4.9 lb (2.2 kg)	5.9 lb (2.7 kg)	5.9 lb (2.7 kg)	4.7 lb (2.1 kg)
Min. Complete System Weight	3.5 lb (1.6 kg)	6.8 lb (3.1 kg)	8.7 lb (4.0 kg)	8.7 lb (4.0 kg)	6.6 lb (3.0 kg)

GPS / IMU Options

	SBG Ellipse-N	SBG Ellipse-D	SPAN-IGM-A1	SPAN-CPT
Accuracy, SBAS	0.6 m	0.6 m	0.6 m	0.6 m
Accuracy, Pitch	0.2°	0.1°	0.04°	0.02°
Accuracy, Roll	0.2°	0.1°	0.04°	0.02°
Accuracy, Heading	1.0°	0.2°	0.22°	0.06°
Weight	0.10 lb (0.05 kg)	0.40 lb (0.18 kg)	1.13 lb (0.52 kg)	5.02 lb (2.28 kg)
Dimensions	4.6 x 4.5 x 2.4 cm	8.7 x 6.7 x 3.2 cm	15.2 x 14.2 x 5.1 cm	16.8 x 15.2 x 8.9 cm
				

Additional Specifications and Options

System Control Computer	1.01 lb / 0.46 kg	System component
Downwelling Calibration Sensor (VNIR)	0.41 lb / 0.19 kg	For monitoring solar illumination
Downwelling Calibration Sensor (NIR)	2.60 lb / 1.18 kg	
Calibration Tarps		Known reflectance standard
 Pika L Gimbal Caddy	0.50 lb / 0.23 kg	UAV mounting package for Pika L airborne system. Compatible with gimbals designed for SLR cameras.
 Vibration Isolation Pod	5.4 lb / 2.5 kg	Mounting package for manned aircraft.

About Resonon

Founded in 2002, Resonon provides turnkey hyperspectral imaging systems as well as custom solutions for complex hyperspectral and optical applications. Our high-precision hyperspectral imaging cameras are affordable, lightweight, easy to use, and have excellent image quality.